



ArcGIS 10.1 for INSPIRE Geodatabase Template Installation Guide

Content

1	Introduction.....	1
2	System Requirements	1
3	Installation.....	1
3.1	Prerequisites.....	1
3.1.1	Database User Rights.....	1
3.1.2	Microsoft SQL Server GEOMETRY Keyword	1
3.1.3	Oracle ExtProc Configuration	1
3.2	Install	2
3.3	Create the INSPIRE Geodatabase	2
3.4	Updates to the INSPIRE Geodatabase.....	4

1 Introduction

The purpose of this document is to provide instructions on installation of the ArcGIS 10.1 for INSPIRE Geodatabase Template for INSPIRE Annex I. The target audience of this document is existing ArcGIS for INSPIRE 1.0 Service Pack (SP) 2 users who want to upgrade the software to ArcGIS 10.1 for INSPIRE and first-time users who want to install ArcGIS 10.1 for INSPIRE directly on their machines.

2 System Requirements

See the system requirements section of the ArcGIS 10.1 for INSPIRE web help at resources.arcgis.com/en/help/arcgis-for-inspire/10.1/index.html.

3 Installation

To apply the ArcGIS 10.1 for INSPIRE Geodatabase Template, you must first install the template and then follow instructions to create the INSPIRE database.

3.1 Prerequisites

3.1.1 Database User Rights

Make sure that the user interacting with the database layer is allowed to create and delete database views. For that, grant specific rights on the database level to the user:

```
GRANT CREATE VIEW TO <USER|ROLE>;  
GRANT DELETE VIEW TO <USER|ROLE>;
```

3.1.2 Microsoft SQL Server GEOMETRY Keyword

If you are installing on SQL Server, you will have to change the configuration string of the GEOMETRY_STORAGE parameter from SDEBINARY to GEOMETRY prior to importing data. This can be done by following the steps below:

1. Open a command line window.
2. Run the sdedbtune command with the alter option (e.g., sdedbtune – o alter).
3. Run the sdedbtune command with the export option to update the dbtune file, or alter the value in the dbtune table within the database (e.g., sdedbtune – o export).

For detailed syntax on running the sdedbtune command, see help.arcgis.com/en/geodatabase/10.0/admin_cmds/support_files/serveradmin/sdedbtune.htm.

3.1.3 Oracle ExtProc Configuration

If you are installing on an Oracle database, make sure that Oracle ExtProc configuration is set up correctly. ArcGIS for INSPIRE makes use of the ST_AS* functions on SQL basis. To check whether your Oracle database is set up correctly, see resources.arcgis.com/en/help/main/10.1/index.html#/Configuring_the_Oracle_extproc_to_access_the_geodatabase_with_SQL/002n00000091000000/.

3.2 Install

The geodatabase implementation of the INSPIRE Annex I data models is defined using the Esri geodatabase XML description. For more detailed information, see "XML Schema of the Geodatabase" at support.esri.com/en/knowledgebase/whitepapers/view/productid/43w/metaid/695.

The latest version of the INSPIRE Annex I Esri geodatabase file can be found in the ArcGIS for INSPIRE distribution folder (e.g., *D:\GDB Templates*).

3.3 Create the INSPIRE Geodatabase

Follow the steps below to create the geodatabase:

1. Start ArcCatalog.
2. Right-click your spatial database connection and choose Import > XML Workspace Document (figure 1).

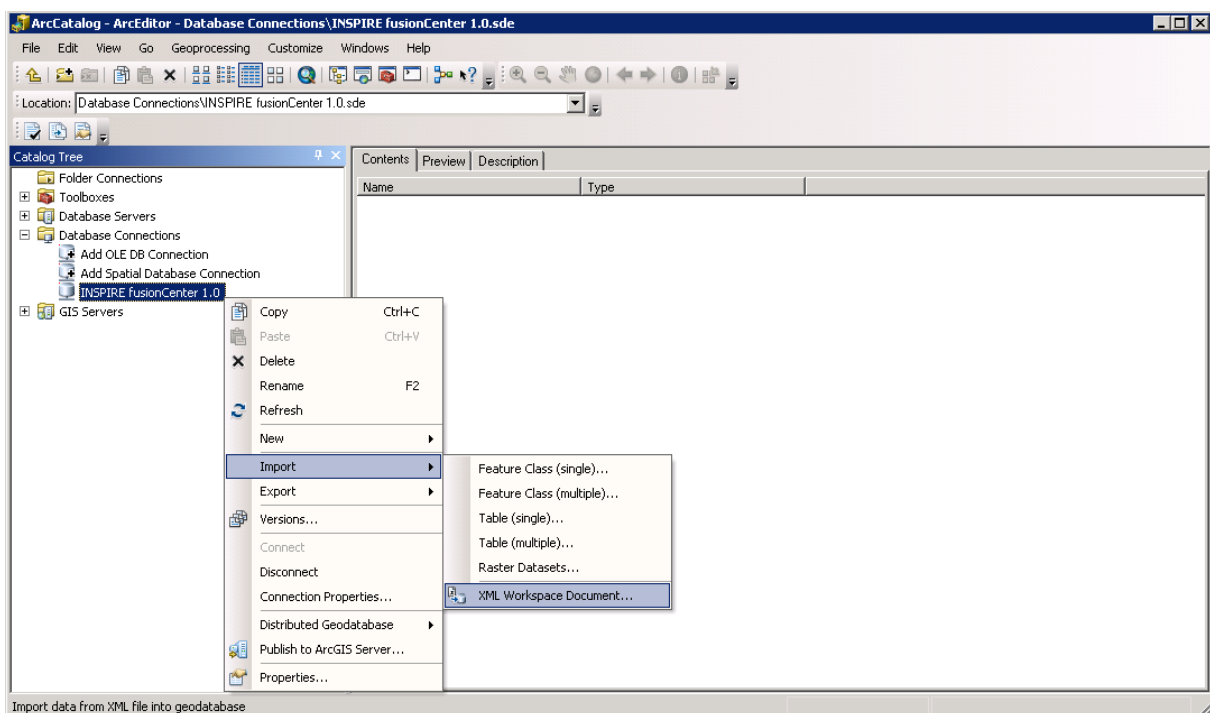


Figure 1: Import of XML Workspace Document

3. Navigate to the file *<ArcGIS for INSPIRE_DVD>\GDB Templates\GDBTemplate\GDB_Template_Annex_1.xml* and click Next (figure 2). Make sure you have selected the Data option because the workspace document contains some information required to run ArcGIS for INSPIRE correctly.

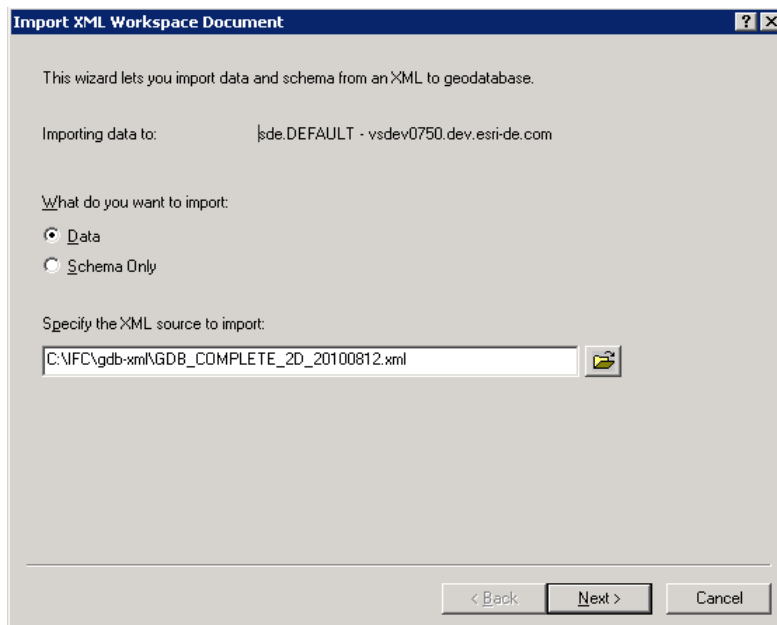


Figure 2: Specify XML Workspace Document to Be Imported

- Click Next. ArcCatalog displays a table that indicates the details of objects to be created (figure 3). The table includes the following columns: Type, Source Name, Target Name, and Config. Keyword. Each type can be a table, a feature class, or a domain.

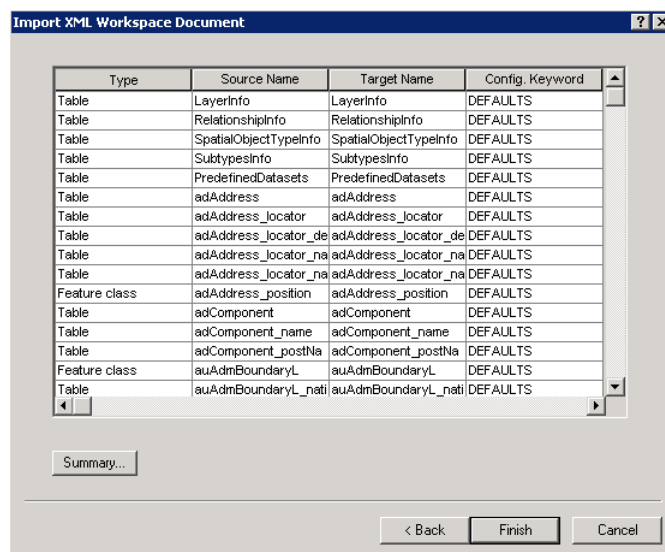


Figure 3: Overview of Feature Classes and Tables to Be Imported

- Click Finish to complete the import. ArcCatalog imports the data and creates the geodatabase for INSPIRE Annex I data models.

Detailed documentation can also be found in the web help topic "Importing a geodatabase schema from an XML workspace document," at help.arcgis.com/en/arcgisdesktop/10.0/help/index.html#/Importing_a_geodatabase_schema_from_an_XML_workspace_document/003n0000002q000000.

3.4 Updates to the INSPIRE Geodatabase

There are five changes that have been made to the geodatabase template in comparison to the template included in ArcGIS for INSPIRE 1.0 SP2:

- Renaming of field isolation from table sdSpeciesDistribution
 - » Makes an update of your existing geodatabase mandatory
- Definition queries for Administrative Units theme in table LayerInfo
 - » Makes an update of your existing geodatabase and services mandatory if you are exposing Administrative Units data
- Introduction of several indexed fields on the whole data model
 - » Update of your geodatabase strongly recommended, as it improves performance
- Addition of a new table named A4I_Info that contains ArcGIS for INSPIRE geodatabase information
 - » Geodatabase update optional
- Improved antialiasing for feature classes and fields
 - » Geodatabase update optional

Please read the ArcGIS 10.1 for INSPIRE Migration Guide for a detailed explanation of the changes and improvements.